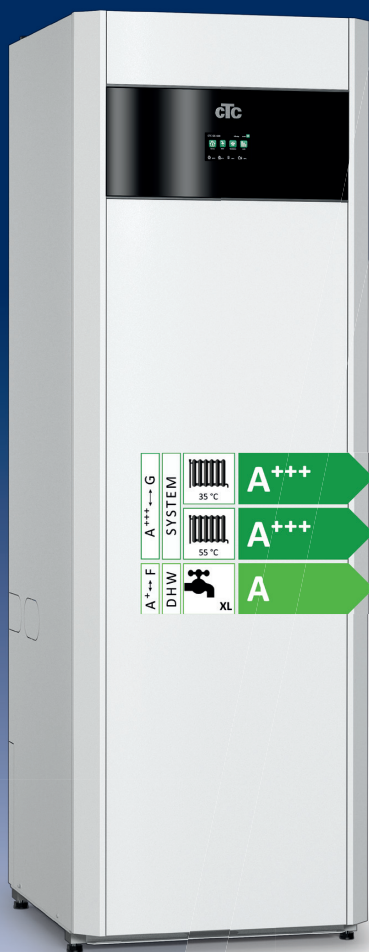




CTC GS 600

Heat pumps for ground source, lake or geothermal heating.
6-8 kW, models 606 and 608



A stylish, smart and economical series of affordable heat pumps that heat both the property and hot water via a quiet scroll compressor with start and stop function (on/off type).

The design of your new heat pump allows it to become a stylish part of your interior, wherever you choose to install it. The fully integrated touchscreen display gives CTC GS 600 a very user-friendly interface, where you can easily access all functions and can both swipe and scroll, just like on your smartphone. The colour touchscreen display has clear symbols and the option to switch language, and makes it easy to adjust the heat and hot water or to retrieve a wealth of data about the operation. In addition, you can easily mirror the display on your tablet, mobile, etc.

CTC GS 600 is a very affordable heat pump, and will provide comfortable heating at the lowest possible cost for many years to come. CTC GS 600 is equipped with a quiet On/Off scroll compressor, which makes the product cheaper to purchase, but with somewhat lower savings.

The CTC GS 600 is available in two sizes (6 and 8 kW) and has a hot water capacity of 300 litres. In order to achieve the lowest energy consumption, they are equipped with A-rated low-energy circulation pumps and very effective insulation.

The CTC GS 600 is ultra-efficient with a very low noise level, since both the compressor and all cooling components are enclosed in a separate, soundproofed unit. Because the supply cable and primary flow sensor are factory-fitted, the CTC GS 600 is easy to install. The supplied magnetite filter also ensures that your radiator system is kept clean and fresh.

CTC GS 600 has internet connectivity as standard, so you can easily control your heat pump remotely. To ensure compatibility with smart homes, the product is equipped for connection to Alexa, Google Home, etc. It is also SmartGrid-ready, which means it is equipped for the electricity grid of the future.

Benefits

- Stylish design
- Smart touch display with user-friendly interface
- Save up to 80 %
- Highest energy class: A +++
- Internet connectivity as standard
- High seasonal coefficient of performance: SCOP 5.0
- Low noise level (39 dBA)
- 300 litres of hot water



Find a CTC distributor in your home country
www.ctc-heating.com

Whenever you purchase a product from CTC, it usually comes fully equipped, but there are also a few smart accessories to make life even easier.

myUplink

With the myUplink app, you can monitor and control your system directly via your mobile phone. For instance, you can adjust the temperature or be alerted if the system shuts down for any reason. The myUplink app can be downloaded for free from the App Store or Google Play.



CTC SmartControl

A series of smart wireless sensors which detect temperature, humidity and carbon dioxide. The system is based on CTC SmartControl Gateway, a base unit able to control up to seven optional wireless accessories.

The series includes a wireless room sensor powered by solar cells, a humidity and CO₂ sensor that can control ventilation as needed, a repeater that amplifies signals between different accessories and a multi-button able to control several different functions, such as additional hot water.

CTC Extra Mixing Valve Group

Complete package for neat and easy installation of additional heating circuits. Complete and ready-to-use with connected controls – so getting started is quick and simple. Equipped with an energy-efficient circulation pump, in accordance with the ErP Directive. Well-insulated unit with easy external access to all adjustment controls and electronic components.

CTC no.: 587396301



CTC Expansion Tank GS

Everything you need to install your product.
Contents: expansion vessel with flexi-hose and connectors.

CTC no.: 587886301

Adapt your product to your ceiling height

Hide pipe connections, etc. with a stylish housing cover, or set the product on a base in the same design. Housing covers are available in three heights and all are combinable to fit most ceiling heights.

Housing Cover, low 146 mm
Housing Cover, medium 380 mm
Housing Cover, high 480 mm
Raised Base II 168 mm

CTC no.: 589440301
CTC no.: 589441301
CTC no.: 589442301
CTC no.: 589590301



Other accessories

CTC Installation Kit EVK

For installation of an additional heat source (wood, water-jacketed stove, etc.)

CTC no.:
587368301

CTC Expansion EnergyFlex II

External control of solar/pool/DHW circulation, etc.

589262301

CTC EcoComfort

A passive cooling unit that uses the borehole's cool temperature

585920001

CTC Flow Heater

INCOLOY – for problem areas with high chlorine content

588360302

CTC Current Sensors, 3-pack

For monitoring the building's main fuses

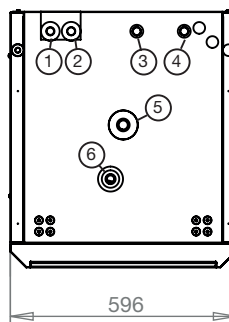
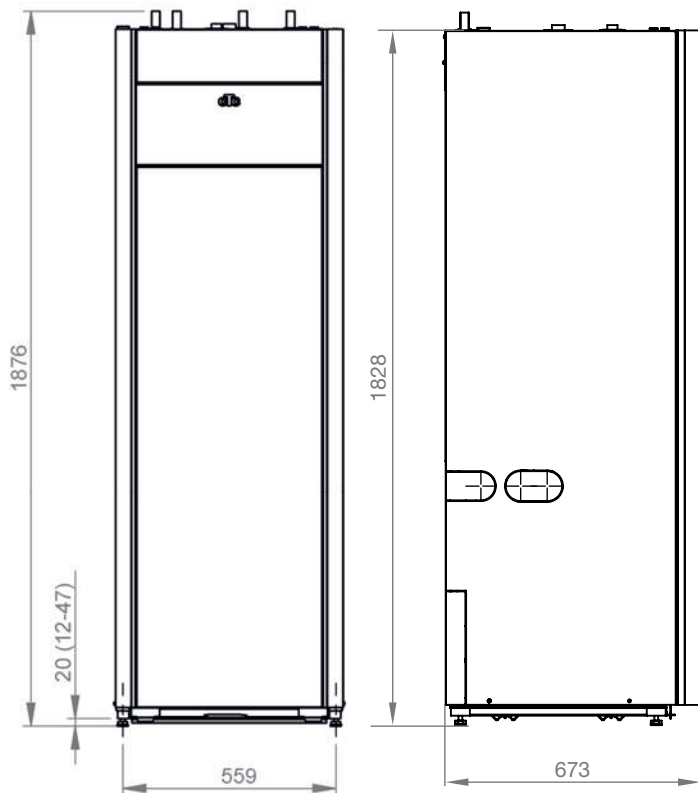
572271001

CTC Filler Manifold G25

Valve manifold with dirt filter for brine filling and shut-off

586720301T

Dimensions diagram



1. Cold water Ø22
2. DHW Ø22
3. Return Ø22
4. Primary flow Ø22
5. Expansion connection/ Lifting sleeve G 3/4"
6. Bleed valve connection G 1/2"

Delivery includes:

Heat pump and manual.

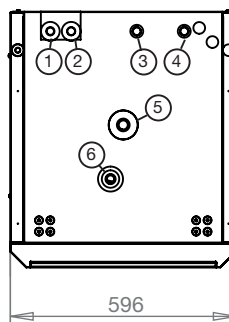
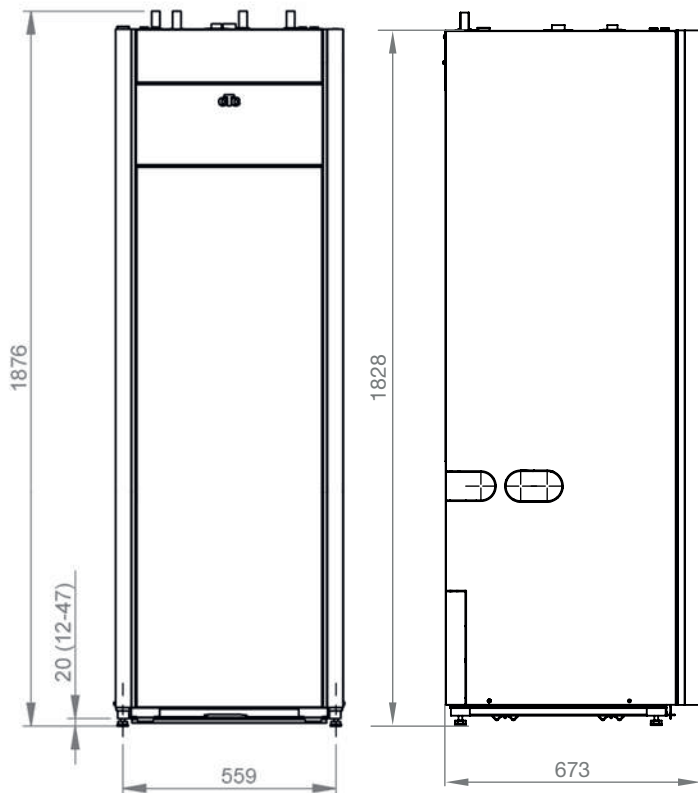
Packaging includes:

Room sensor, outdoor sensor, filler manifold, brine level tank, brine hoses, magnetite filter for return heating circuit, pressure gauge, cold water dirt filter, automatic bleeder, safety valve for brine (3 bar) and heating system (2.5 bar).

Technical data 3x400 V		606	608
CTC-no		589310001	589310002
Weight (packaged weight)	kg	254 (283)	252 (281)
Dimensions DxBxH	mm	673x596x1876	673x596x1882
Required ceiling height	mm	1940	
Specified output max: W35 & B0/5/10 (EN14511)	kW	6.04 / 6.8 / 7.54	8.29 / 9.52 / 10.9
Input power max: W35 & B0/5/10 (EN14511)	kW	1.34 / 1.33 / 1.41	1.74 / 1.76 / 1.83
COP max: W35 & B0/5/10 (EN14511)		4.52 / 5.11 / 5.36	4.77 / 5.4 / 5.93
Sound power L_{WA} B0/W35 (EN 12102)	dB(A)	41.0	39.3
Sound pressure L_{PA} 1m B0/W35 (EN ISO 11203)	dB(A)	36	34.3
Electrical Data, connection		400V 3N~ 50Hz	
Rated current (recommended fuse: 20A)	A	17.1	18.6
Max. immersion heater output at group fuse: 10/13/16/20/25 A	kW	2.1 / 2.1 / 6.9 / 9.0 / 9.0	0.9 / 2.1 / 4.9 / 7.8 / 9.0
Ingress Protection class (IP)		IP X1	
Output range immersion heater (min-max)	kW	0.3 - 9	
Refrigerant quantity (R407C, GWP 1774)	kg	1.9	
CO ₂ - equivalent	tonnes	3.371	
DHW-performance V_{40} Ekonomi/Normal/Komfort (EN16147)	litres	210 / 239 / 304	210 / 241 / 304
SCOP cold climate: W35 (EN14825, Pdesignh)		4.80	5.04
SCOP average climate: W35 (EN14825, Pdesignh)		4.72	4.96
Package efficiency class: W35/W55 (A+++ - G)		A+++/A++	
Energy efficiency class: W35/W55 (A+++ - D)		A++/A++	
Energy efficiency class DHW (A+ - F) / charge profile (EN16147)		A/XL	

Energy labels and data sheets can be downloaded from www.ctc-heating.com/Ecodesign

Dimensions diagram



1. Cold water Ø22
2. DHW Ø22
3. Return Ø22
4. Primary flow Ø22
5. Expansion connection/ Lifting sleeve G 3/4"
6. Bleed valve connection G 1/2"

Delivery includes:

Heat pump and manual.

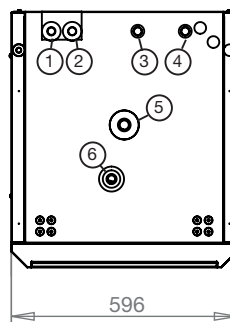
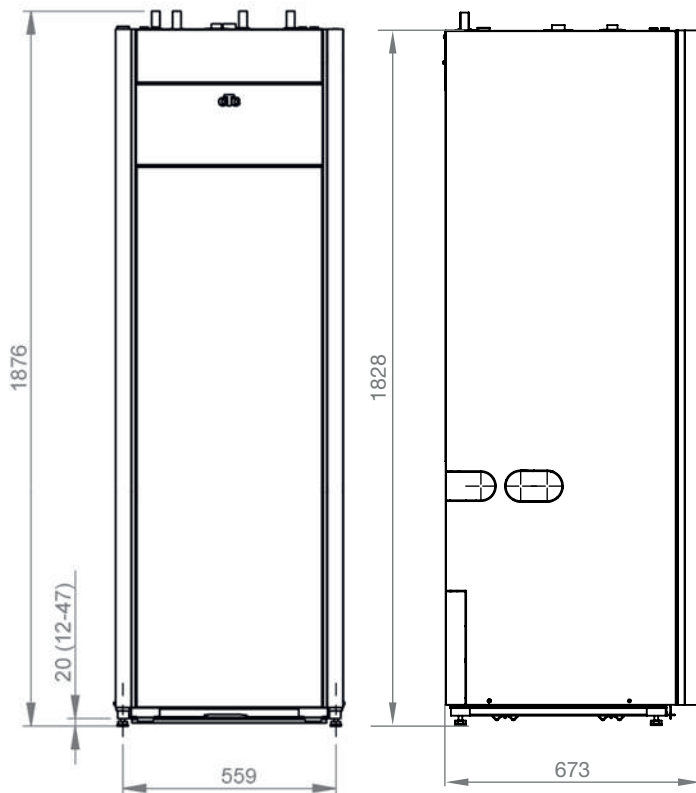
Packaging includes:

Room sensor, outdoor sensor, filler manifold, brine level tank, brine hoses, magnetite filter for return heating circuit, pressure gauge, cold water dirt filter, automatic bleeder, safety valve for brine (3 bar) and heating system (2.5 bar).

Technical data 1x230 V		606	608
CTC-no		589311001	589311002
Weight (packaged weight)	kg	256 (285)	254 (283)
Dimensions DxBxH	mm	673x596x1876	673x596x1882
Required ceiling height	mm	1940	
Specified output max: W35 & B0/5/10 (EN14511)	kW	6.04 / 6.8 / 7.54	8.29 / 9.52 / 10.9
Input power max: W35 & B0/5/10 (EN14511)	kW	1.34 / 1.33 / 1.41	1.74 / 1.76 / 1.83
COP max: W35 & B0/5/10 (EN14511)		4.52 / 5.11 / 5.36	4.77 / 5.4 / 5.93
Sound power L_{WA} B0/W35 (EN 12102)	dB(A)	41.0	39.3
Sound pressure L_{PA} 1m B0/W35 (EN ISO 11203)	dB(A)	36	34.3
Electrical Data, connection		230V 1N~ 50Hz	
Rated current (recommended fuse: 50 A)	A	38	42.5
Max. immersion heater output at group fuse: 20/25/32/35/50/63 A	kW	0.3/0.9/3.2/3.2/5.5/5.5	0.0/0.0/0.9/2.3/5.5/5.5
Ingress Protection class (IP)		IP X1	
Output range immersion heater (min-max)	kW	0.3-5.5	
Refrigerant quantity (R407C, GWP 1774)	kg	1.9	
CO ₂ - equivalent	tonnes	3.371	
DHW-performance V_{40} Ekonomi/Normal/Komfort (EN16147)	litres	210 / 239 / 304	210 / 241 / 304
SCOP cold climate: W35 (EN14825, Pdesignh)		4.80	5.04
SCOP average climate: W35 (EN14825, Pdesignh)		4.72	4.96
Package efficiency class: W35/W55 (A+++ - G)		A+++ / A++	
Energy efficiency class: W35/W55 (A+++ - D)		A++ / A++	
Energy efficiency class DHW (A+ - F) / charge profile (EN16147)		A / XL	

Energy labels and data sheets can be downloaded from www.ctc-heating.com/Ecodesign

Dimensions diagram



1. Cold water Ø22
2. DHW Ø22
3. Return Ø22
4. Primary flow Ø22
5. Expansion connection/ Lifting sleeve G 3/4"
6. Bleed valve connection G 1/2"

Delivery includes:

Heat pump and manual.

Packaging includes:

Room sensor, outdoor sensor, filler manifold, brine level tank, brine hoses, magnetite filter for return heating circuit, pressure gauge, cold water dirt filter, automatic bleeder, safety valve for brine (3 bar) and heating system (2.5 bar).

Technical data 3x230 V		606	608
CTC-no		589312001	589312002
Weight (packaged weight)	kg	256 (285)	254 (283)
Dimensions DxBxH	mm	673x596x1876	673x596x1882
Required ceiling height	mm	1940	
Specified output max: W35 & B0/5/10 (EN14511)	kW	6.04 / 6.8 / 7.54	8.29 / 9.52 / 10.9
Input power max: W35 & B0/5/10 (EN14511)	kW	1.34 / 1.33 / 1.41	1.74 / 1.76 / 1.83
COP max: W35 & B0/5/10 (EN14511)		4.52 / 5.11 / 5.36	4.77 / 5.4 / 5.93
Sound power L_{WA} B0/W35 (EN 12102)	dB(A)	41.0	39.3
Sound pressure L_{PA} 1m B0/W35 (EN ISO 11203)	dB(A)	36	34.3
Electrical Data, connection		230V N~ 50Hz	
Rated current (recommended fuse)	A	29.5 (32)	34 (35)
Max. immersion heater output at group fuse: 20/25/32/35/50/63 A	kW	3.5/4.7/5.9/7.0/7.0/7.0	0/3.5/4.7/5.9/7.0/7.0
Ingress Protection class (IP)		IP X1	
Output range immersion heater (min-max)	kW	1.2-7	
Refrigerant quantity (R407C, GWP 1774)	kg	1.9	
CO ₂ - equivalent	tonnes	3.371	
DHW-performance V_{40} Ekonomi/Normal/Komfort (EN16147)	litres	210 / 239 / 304	210 / 241 / 304
SCOP cold climate: W35 (EN14825, Pdesignh)		4.80	5.04
SCOP average climate: W35 (EN14825, Pdesignh)		4.72	4.96
Package efficiency class: W35/W55 (A+++ - G)		A+++ / A++	
Energy efficiency class: W35/W55 (A+++ - D)		A++ / A++	
Energy efficiency class DHW (A+ - F) / charge profile (EN16147)		A / XL	

Energy labels and data sheets can be downloaded from www.ctc-heating.com/Ecodesign